

Energy-meters three-phase - BASIC

digital active energy-meter
imported and exported energies - 2 tariffs - 2 S0

- ▶ Direct connection 80 A
- ▶ Connection through CT .../5 A till 10.000/5 A
- ▶ Connection through CT .../1 A till 2.000/1 A

Application

The energy-meters "LCD screen for perfect reading" are used to measure three-phase systems like in Residential, Utility and Industrial applications.

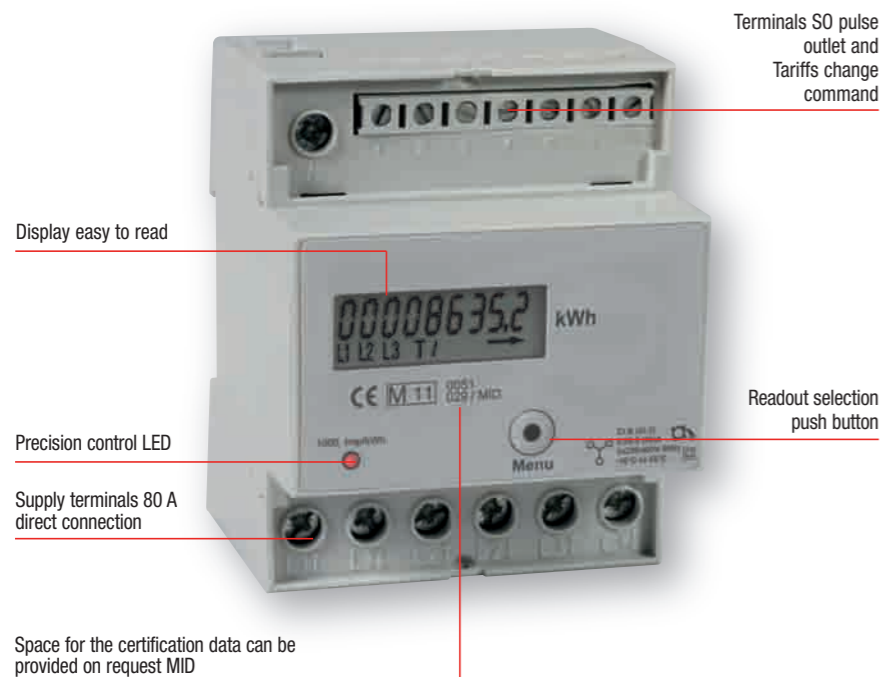


Function

Display

	Unit	ID
Active energy	Tariff 1	kWh
	Tariff 2	kWh
Phase disconnection		Phase Err
Active phases		L1 - L2 - L3
Primary transformer	5 ... 10.000/5	A
Primary transformer	1 ... 2.000/1	A

4 standard module housing, suitable for DIN rail mounting
Direct connection 80 A



Energy-meters three-phase - BASIC

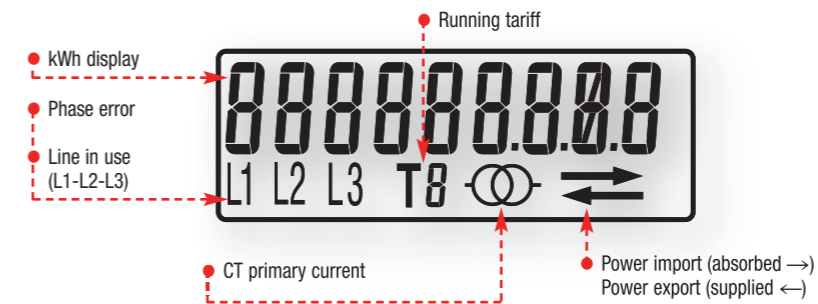
digital active energy-meter
imported and exported energies - 2 tariffs - 2 S0

Sealable terminal covers



Display

Liquid crystal display

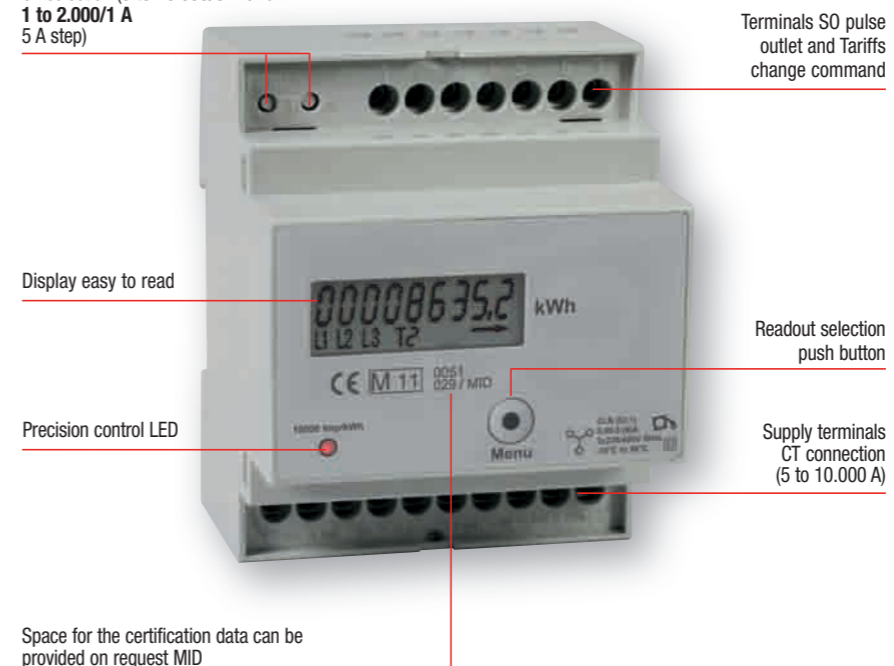


Main pages for version connection through CT .../5 A and CT .../1 A

- Current transformer turns ratio (Example with CT .../5 A)
- Import → Active Energy T1
- Export ← Active Energy T1 (Example with line 2 missing)
- Import → Active Energy T2
- Export ← Active Energy T2
- Firmware release
- Firmware object code checksum

4 standard module housing, suitable for DIN rail mounting
Connection through CT .../5 A till 10.000/5 A and 2.000/1 A

CT selection (5 to 10.000/5 A and 1 to 2.000/1 A 5 A step)



Contatori trifase - BASIC

digitale di energia attiva assorbita ed erogata
2 tariffe - 2 S0

- Connessione diretta 80 A
- Connessione a mezzo TA .../5 A fino 10.000/5 A o fino 2.000/1 A

Applicazioni

I contatori di energia digitali con display LCD per una visualizzazione e lettura veloce e corretta, sono usati per misurare l'energia negli impianti trifase come ad esempio nelle applicazioni residenziali, generiche ed industriali. Il monitoraggio del consumo di energia viene eseguito con uscita impulso S0.

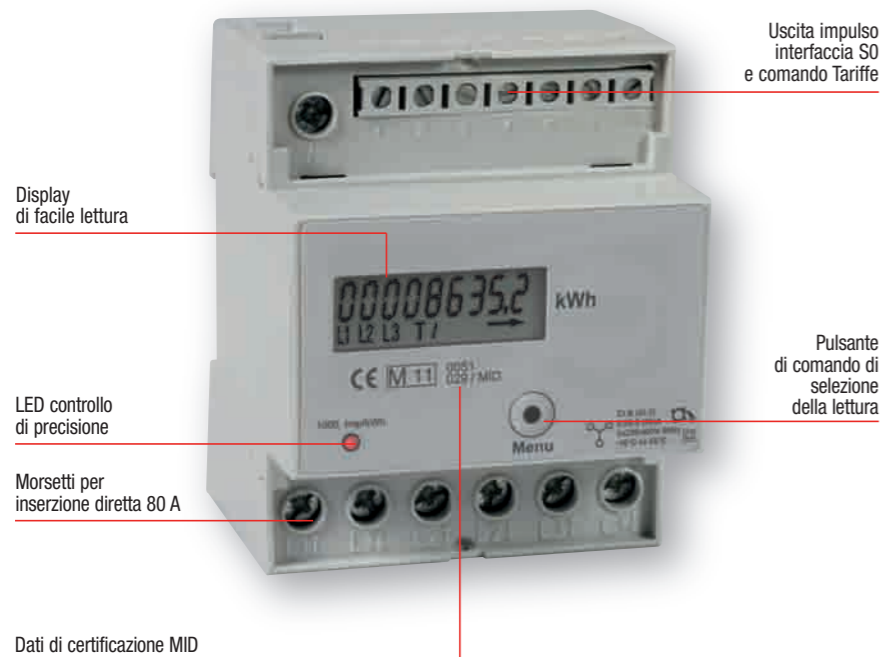


Funzione

Display

		Unità	ID
Energia attiva	Tariffa 1	kWh	Energia assorbita o erogata
	Tariffa 2	kWh	Energia assorbita o erogata
Errato collegamento			Phase Err
Fasi presenti			L1 - L2 - L3
Trasformatore corrente primaria	5 ... 10.000/5	A	TA (trasformatori di corrente)
Trasformatore corrente primaria	1 ... 2.000/1	A	TA (trasformatori di corrente)

Apparecchio digitale 4 moduli DIN - montaggio su binario 35 mm Connessione diretta 80 A



Contatori trifase - BASIC

digitale di energia attiva assorbita ed erogata
2 tariffe - 2 S0

Descrizione Display

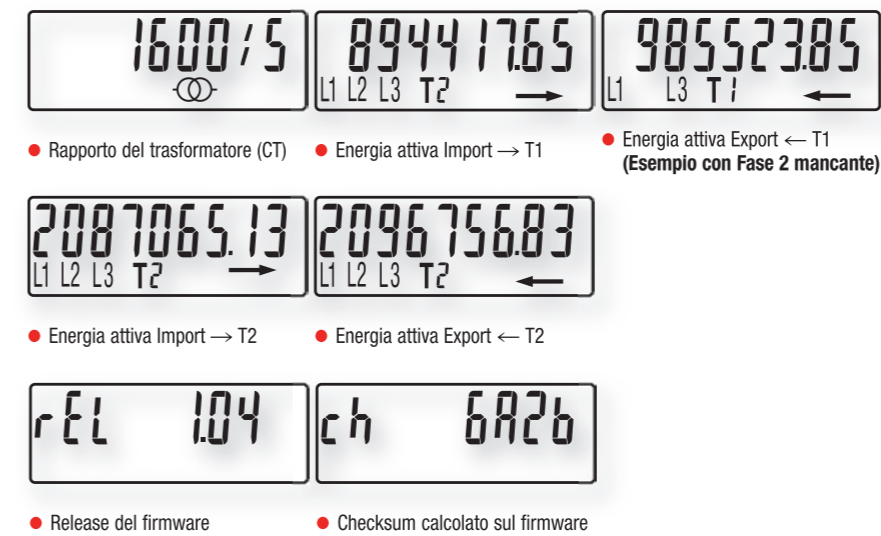
Visualizzatore a cristalli liquidi



Copertura morsetti piombabile

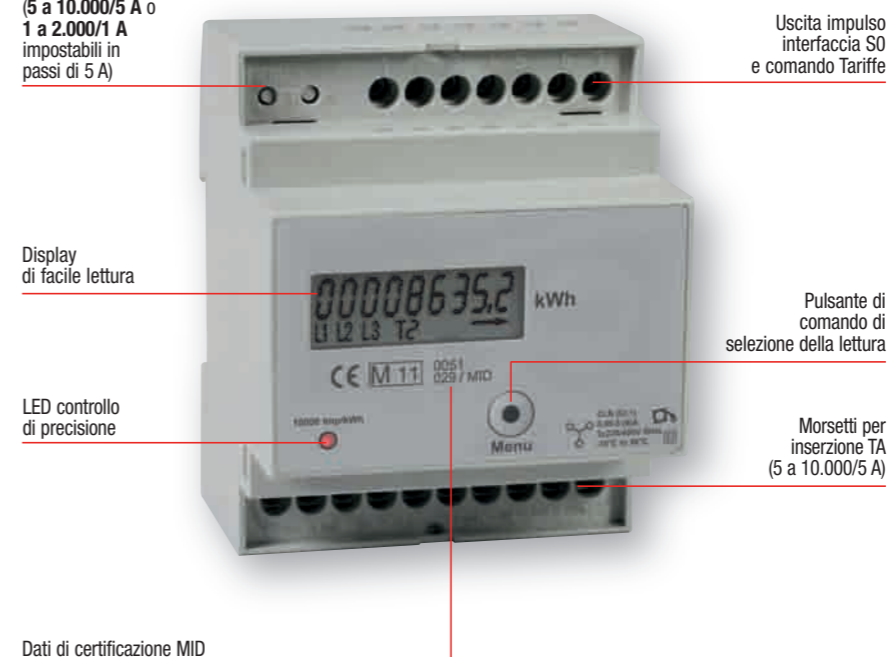


Pagine Principali per la versione con TA esterni



Apparecchio digitale 4 moduli DIN - montaggio su binario 35 mm Connessione a mezzo TA .../5 A fino 10.000/5 A o fino 2.000/1 A

Selezione TA (5 a 10.000/5 A o 1 a 2.000/1 A impostabili in passi di 5 A)



Drehstromzähler - BASIC

digitale Wirkenergie Zähler
Abgabe-Bezugsenergieregister und mit - 2 Tarife - 2 S0

- ▶ Direktanschluß bis 80 A
- ▶ Wandlerstromanschluß für .../5 A bis 10.000/5 A
- ▶ Wandlerstromanschluß für .../1 A bis 2.000/1 A

Anwendungsbereich

Diese Energiezähler dienen zur Messung von kWh in dreiphasigen Netzen, z. B. in Industrieanlagen, Büros und Wohnungen in Mehrfamilienhäusern.

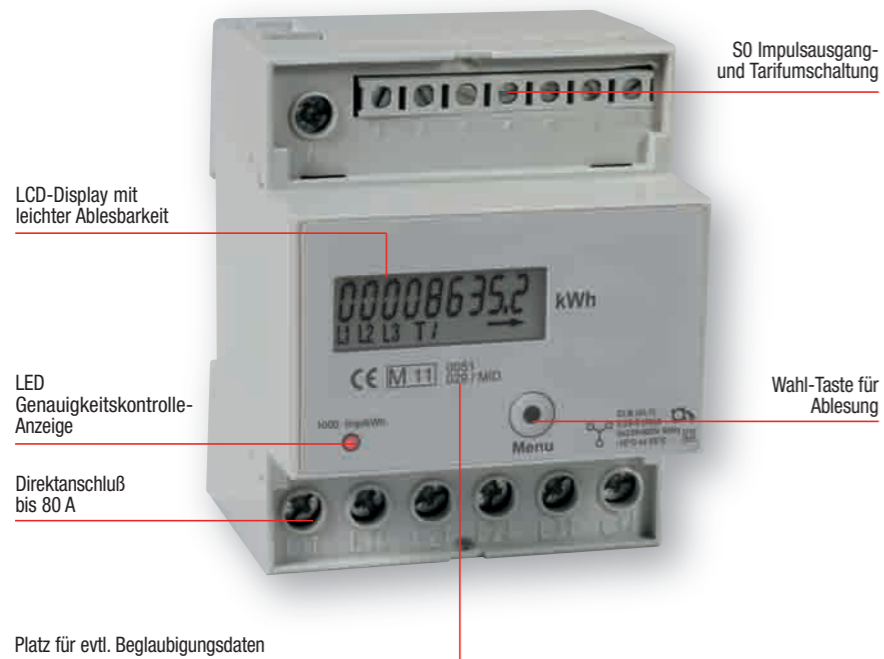


Funktion

Display

	Einheit	Kennung
Wirkenergie	Tarif 1	kWh
	Tarif 2	kWh
Phasenausfall		Phase Err
Aktive Phasen		L1 - L2 - L3
Primärwandlerstrom	5 ... 10.000/5	A
Primärwandlerstrom	1 ... 2.000/1	A

digitale Energiezähler in 4 TE für die DIN-Hutschienen-(35 mm) Montage Direktanschluß bis 80 A

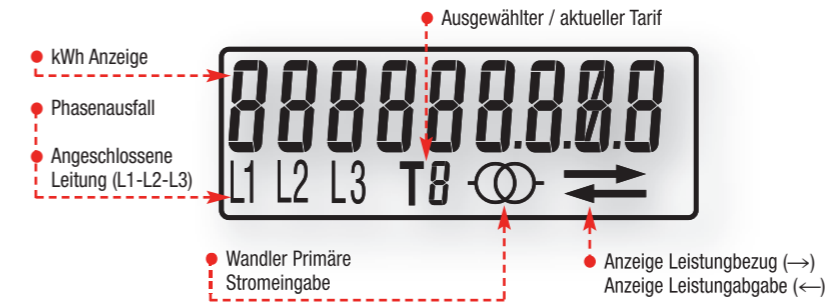


Drehstromzähler - BASIC

digitale Wirkenergie Zähler
Abgabe-Bezugsenergieregister und mit - 2 Tarife - 2 S0

Beschreibung der Anzeige

LCD Display



Klemmenabdeckungen plombierbar

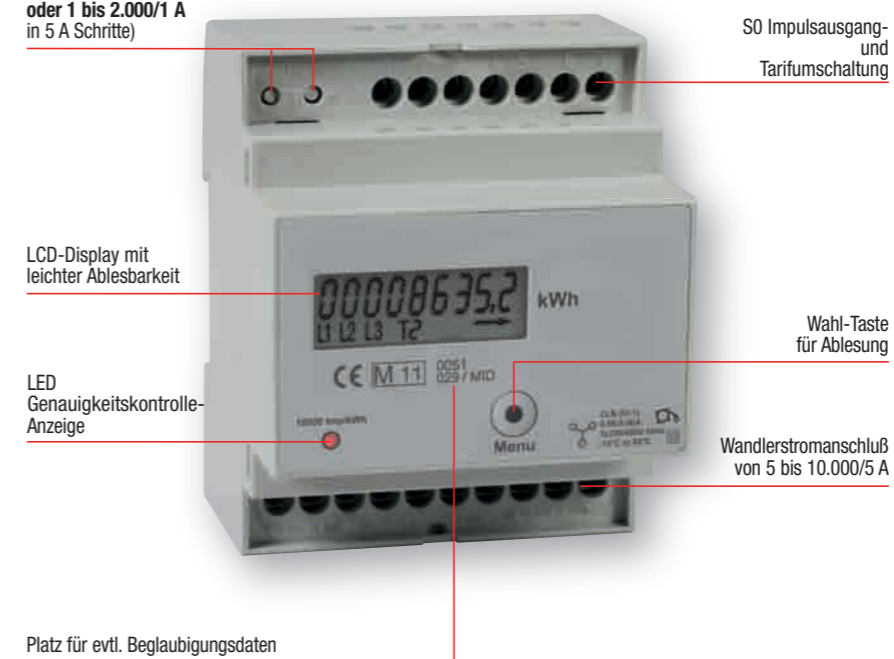


Hauptseiten bei BASIC für Wandlerstromanschluß

- Primär- und Sekundärstromanzeige (Beispiel mit Wandler .../5 A)
- Wirkenergie Leistungsbezug → T1
- Wirkenergie Leistungsabgabe ← T1 (Beispiel mit fehlender Phase 2)
- Wirkenergie Leistungsbezug → T2
- Wirkenergie Leistungsabgabe ← T2
- Firmware Freigabe
- Firmware Objektcodeprüfsumme

digitale Energiezähler in 4 TE für die DIN-Hutschienen-(35 mm) Montage Wandlerstromanschluß für .../5 A bis 10.000/5 A oder 2.000/1 A

Primäre WandlerstromEinstellung (von 5 bis 10.000/5 A oder 1 bis 2.000/1 A in 5 A Schritte)



DEUTSCH